

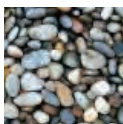
# CREEK VIEW

BIG SUR, CALIFORNIA



A romantic creek surrounds this small promontory in the middle of a redwood forest. A steel platform on pier footings cantilevers between the large redwood trees to support the two story core and five single story wings, each housing a room or deck. Fire being a major concern – CorTen Steel Siding was chosen as the finish material, which also disappears into the surrounding forest of rust-colored redwood trunks.

Total Floor Area: 1,640 SF



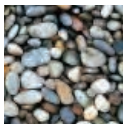
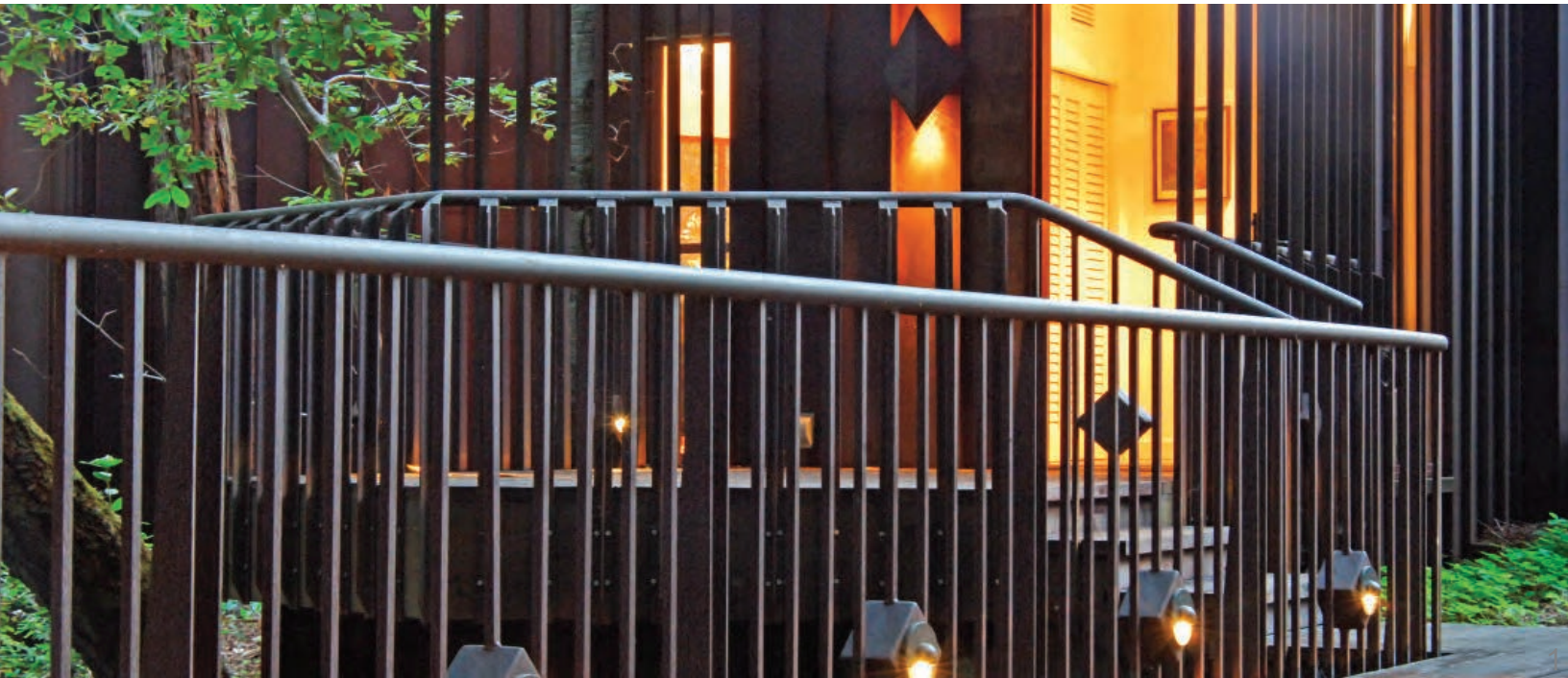
**STUDIO CARVER**

ARCHITECTURE + PLANNING + INTERIOR DESIGN

PO BOX 2684 • CARMEL CA 93921 • USA • EARTH

T 831.622.7837 • F 831.624.0364 • WWW.STUDIOCARVER.COM



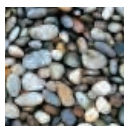
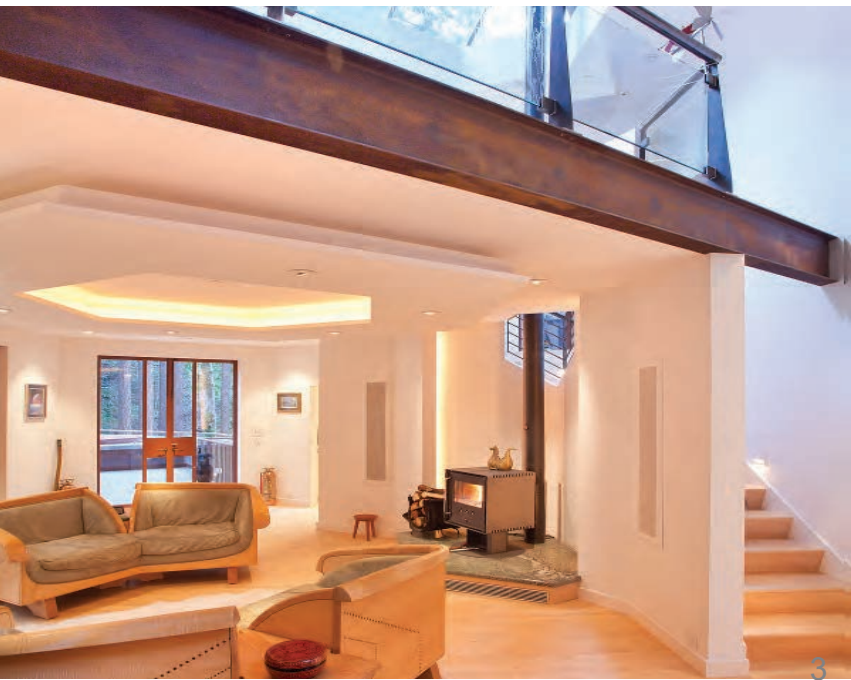


## STUDIO CARVER

ARCHITECTURE + PLANNING + INTERIOR DESIGN

PO BOX 2684 • CARMEL CA 93921 • USA • EARTH  
T 831.622.7837 • F 831.624.0364 • WWW.STUDIOCARVER.COM





## STUDIO CARVER

ARCHITECTURE + PLANNING + INTERIOR DESIGN

PO BOX 2684 • CARMEL CA 93921 • USA • EARTH

T 831.622.7837 • F 831.624.0364 • WWW.STUDIOCARVER.COM